

The CITY Townhome

SQUARE FEET: 2,267
FLOOR LEVELS: 3RD AND SKY LOFT

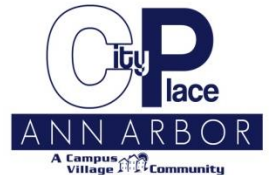
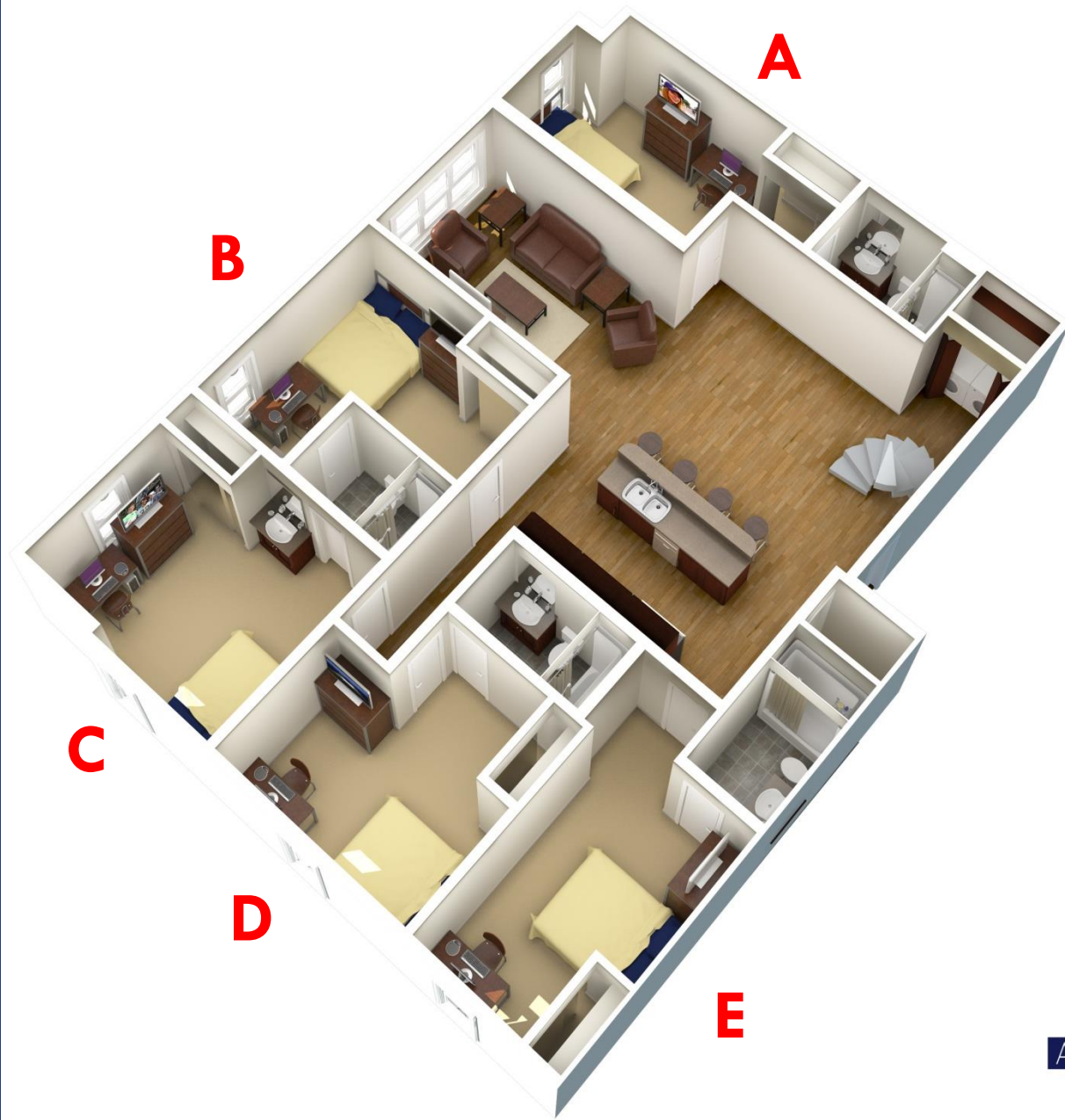
6 PRIVATE BEDROOMS
4 PRIVATE BATHROOMS
1 SHARED BATHROOM

Floor Displayed: 3RD

Common Area Details:

Vaulted ceilings, spiral staircase, kitchen with granite countertops, sleek black appliances, in-unit washer and dryer, common area with one couch, two chairs, one end table, one coffee table, four barstools, wall-mounted entertainment center with 50" TV with HD and extended DirecTV channel line-up, and a 42" TV with Standard Definition DirecTV.

Bedrooms A, C & D w/ Private Bathroom; Bedrooms B & C with Shared Bathroom: Full-size bed, four-drawer dresser, desk, desk chair, desk hutch, mirrored closet doors, closet with built-in organizers, mini-fridge and microwave, and shower/tub combination in bathroom.



*NOTICE: Photos may not represent actual product and may not guarantee floor plan styles, colors, contents or decor as demonstrated; contact the leasing office for specific details.

The CITY Townhome

SQUARE FEET: 2,267
FLOOR LEVELS: 3RD AND SKY LOFT

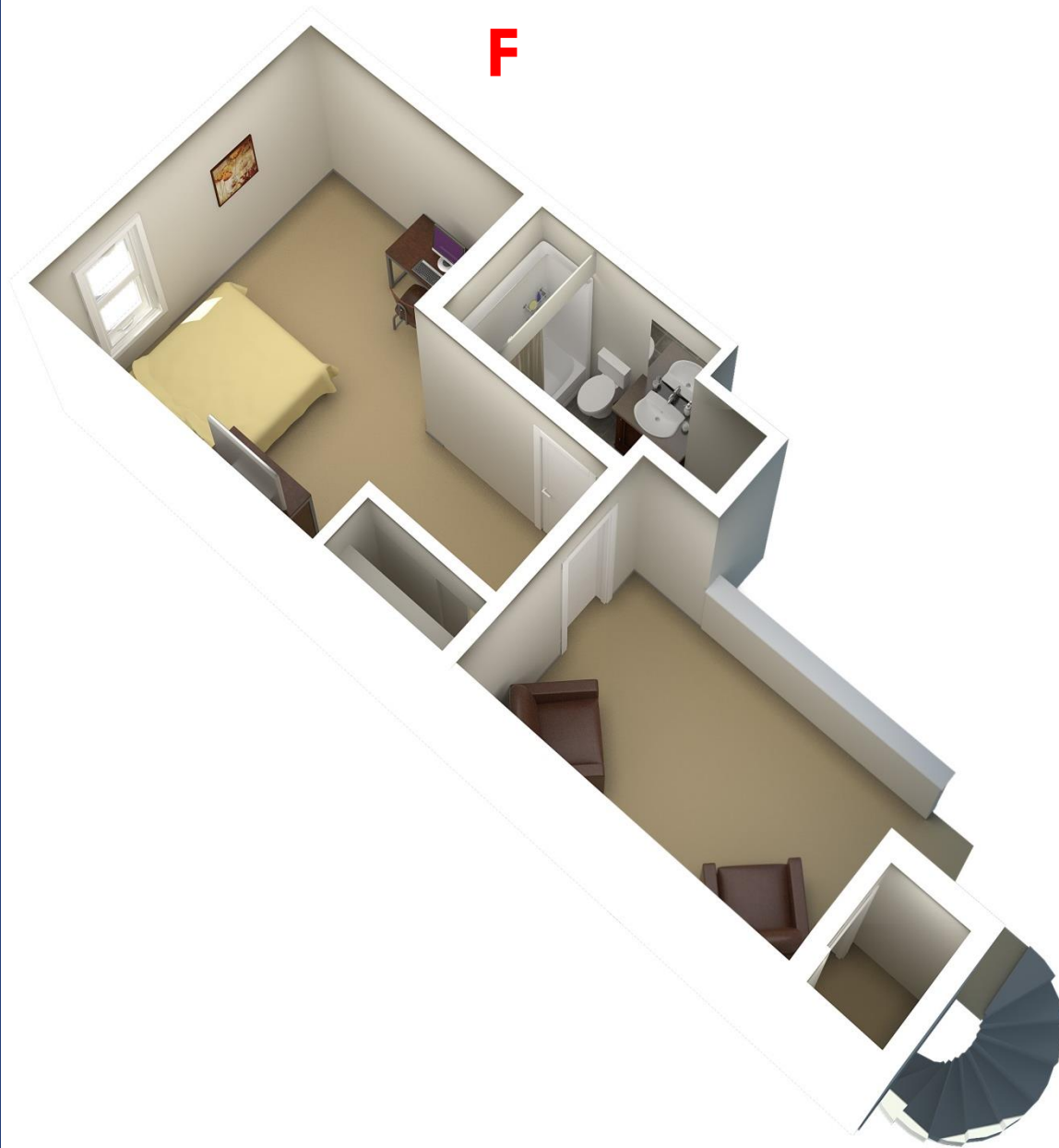
6 PRIVATE BEDROOMS
4 PRIVATE BATHROOMS
1 SHARED BATHROOM

Floor Displayed: Sky Loft

Common Area Details:

Vaulted ceiling and spiral staircase; two chairs and one end table; Sky Loft common area space is open to the floor below.

Bedrooms F Sky Loft w/ Private Bathroom: Full-size bed, four-drawer dresser, desk, desk chair, desk hutch, mirrored closet doors, closet with built-in organizers, mini-fridge and microwave, and shower/tub combination in bathroom.



*NOTICE: Photos may not represent actual product and may not guarantee floor plan styles, colors, contents or decor as demonstrated; contact the leasing office for specific details.